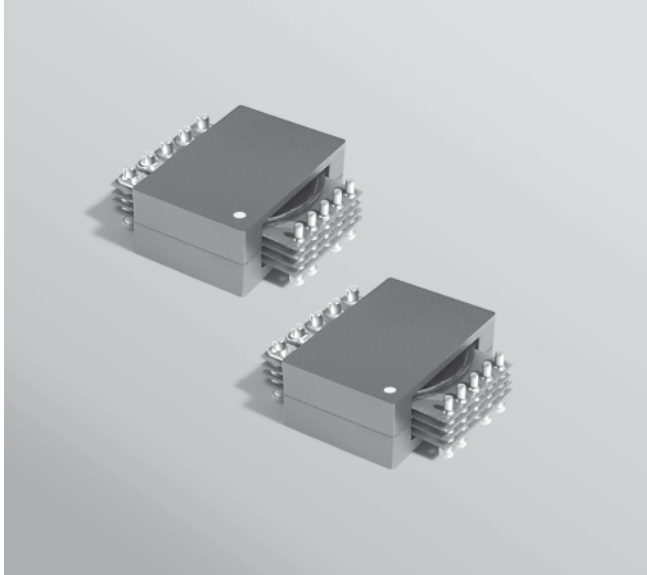




NEW!

SMT Planar Transformer

For NSC LM5035
PWM Controller



The DA2025-AL surface mount planar transformer is approved by National Semiconductor for use with its LM5035 PWM Controller with Integrated 105 V Half-Bridge and SyncFET Drivers. It is listed in AN-1435 LM5035 Evaluation Board Application Note.

This transformer is designed for 100 Watt applications and can handle current up to 30 A. It features excellent DCR, very low leakage inductance and 1500 Vdc primary to secondary isolation.

Coilcraft can also design custom planar transformers with different turns ratios and with an auxiliary winding to meet your specific requirements.

For free evaluation samples, contact Coilcraft or visit www.coilcraft.com.

Part number ¹	Output power (W)	Output voltage (V)	Output current (A rms)	Primary inductance ² min (µH)	Leakage inductance ³ max (µH)	DCR max (mOhms)	Pri/sec isolation (Vdc)
DA2025-AL_	100	3.3	30.0	120.0	0.25	50 (pri) 2 (sec) 250 (aux)	1500

1. When ordering, please specify **packaging** code:

DA2025-ALD

Packaging: D = 13" machine ready reel. EIA-481 embossed plastic tape (200 parts per full reel).

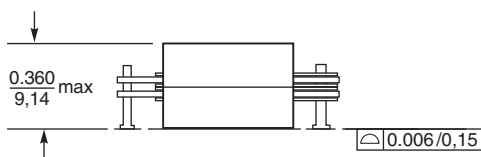
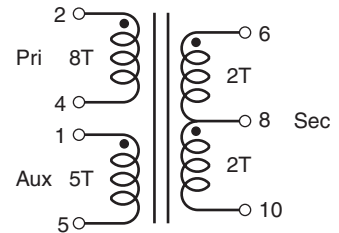
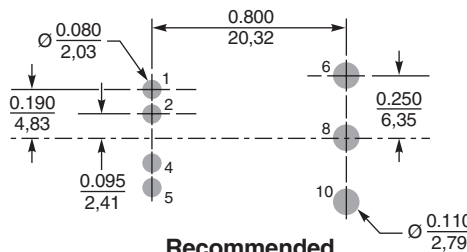
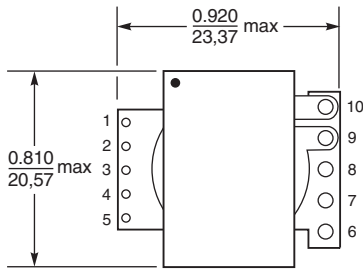
B = Less than full reel. In tape, but not machine ready. To have a leader and trailer added (\$25 charge), use code letter D instead.

2. Inductance measured on an Agilent/HP 4284 between pins 2 and 4 at 200 kHz, 0.1 Vrms, 0 Adc.

3. Leakage inductance measured between pins 2 and 4 at 200 kHz, 0.1 Vrms, 0 Adc with secondary pins shorted.

4. Ambient operating temperature range: -40°C to +85°C.

5. Electrical specifications at 25°C.



Weight: 12.5 g
Terminations: Matte tin over nickel over brass
Tape and reel: 200/13" reel 44 mm tape width



Specifications subject to change without notice. Please check our website for latest information.

Document 488 Revised 02/07/06

1102 Silver Lake Road Cary, Illinois 60013 Phone 847/639-6400 Fax 847/639-1469

E-mail info@coilcraft.com Web <http://www.coilcraft.com>